



RECEIVED
JUL 29 2024

July 25, 2024

Mr. Ivan D. Butts
President
National Association of Postal Supervisors
1727 King St., STE 400
Alexandria, VA 22314-2753

Certified Mail Tracking Number:
7020 3160 0002 0328 1737

Dear Ivan:

As a matter of general interest, the Postal Service plans to deploying an audible navigation feature to the Postal Vehicle Service's (PVS) TC77 scanner, called PVSmobile CoPilot Turn-by-Turn.

Currently, the Postal Service does not utilize audible turn-by-turn driving directions to assist PVS drivers when moving between locations on their Postal Vehicle Service (PVS) route. PVSmobile CoPilot Turn-by-Turn is a mapping feature that starts on PVS mobile devices when a PVS driver departs a trip and provides audible directions that navigates the driver to their destination facility.

This application is tentatively scheduled to be beta tested beginning July 29 with the PVS operation at the Oklahoma City, Oklahoma Processing and Distribution Center (P&DC). Following successful testing, the Postal Service plans to deploy the navigation feature nationwide.

Enclosed is a Service Talk for PVSmobile CoPilot Turn-by-Turn.

If there are any questions, please contact Robert Ocasio at 813-382-0689.

Sincerely,

A handwritten signature in blue ink, appearing to read "Shannon R. Richardson".

Shannon R. Richardson
Director
Contract Administration (APWU)

Enclosure

Service Talk – PVSmobile CoPilot Turn-by-Turn

July 23, 2024

PVSmobile CoPilot Turn-by-Turn

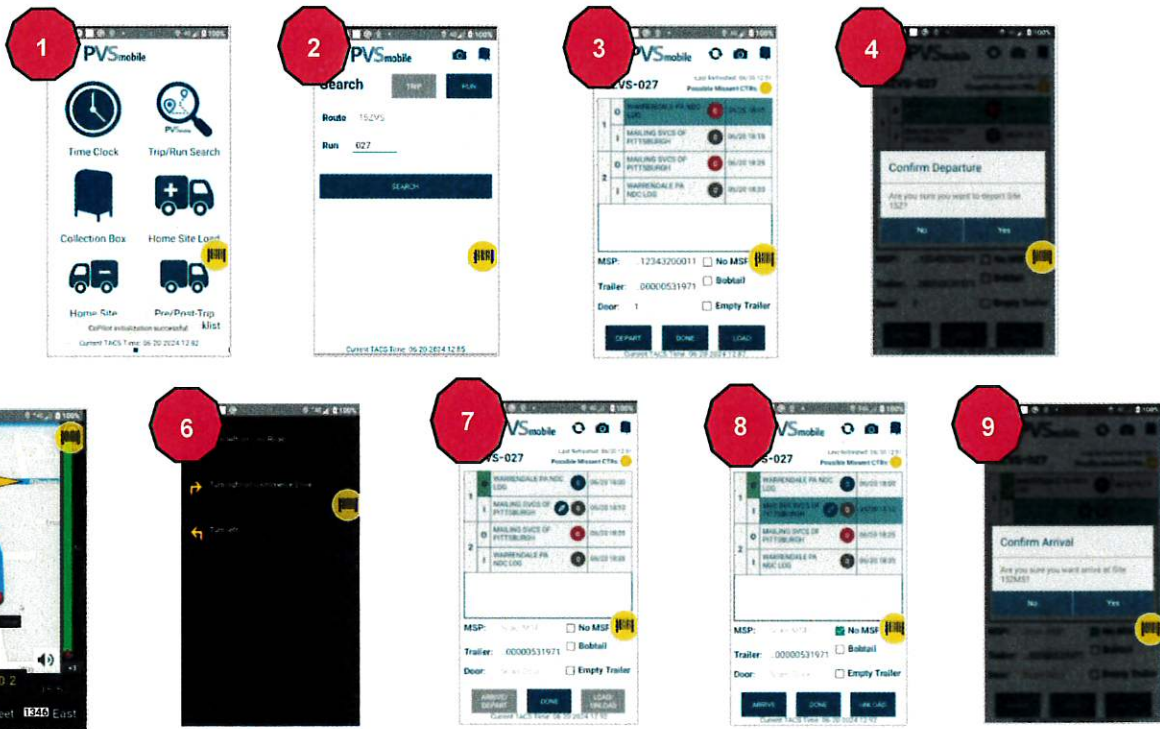
As part of SV Release 3.39, the **PVS CoPilot Turn-by-Turn** navigation feature is “tentatively scheduled” to be activated as a Pilot on PVSmobile scan devices at several Test Sites **only**, on July 23, 2024, prior to a National deployment. Dates for National deployment have not been determined. Pilot Test Sites will be notified of any activation schedule changes.

The Turn-by-Turn navigation feature will only be available on licensed PVSmobile devices. If licensed for Turn-by-Turn use, the driver receives a “**CoPilot Initialization Successful**” toast message upon opening PVSmobile. The navigation icon will also display at the top left of the device, on trip legs and info is also viewable in CoPilot Settings in the Device Information section of the device Navigation Menu. Turn-by-Turn will utilize “heavy truck route” navigation.

The driver will follow regular Depart/Arrive procedures and will search for a Route/Trip or Route/Run to view all Trip Legs. After departing and confirming the first Outbound Leg, the Turn-by-Turn feature will appear on the device and audible navigation will guide the driver to the destination Delivery Address. Once the driver arrives at the Inbound Leg, they will follow normal trip arrival and confirmation procedures. If a destination Delivery Address is unavailable, a “CoPilot Error” toast message will appear on the device. The driver is to notify their MLO/SLO, who is responsible to create a ticket with ITSDSupport@usps.gov if a known Delivery Address does not display.

The up/down buttons on the side of the device adjust the navigation volume. The ‘back’ button on the device can be used to turn off Turn-by-Turn navigation. Select the Inbound leg navigation icon to return to Turn-by-Turn. Navigation will be available for all Outbound Legs of Trip upon Departure of the Leg.

- To start Turn-by-Turn navigation, open the Trip/Run Search from the PVSmobile home page (Fig.1)
- Search for a Route and Trip or a Route and Run (Fig.2).
- Select the first Outbound Leg, select “Depart” (Fig.3). Confirm the Departure (Fig.4).
- Turn-by-Turn will open and provide navigation to the Delivery Address destination (Fig.5)
- Select the arrow at the bottom on the navigation screen to open the trip itinerary (Fig.6)
- If the feature is closed, select the subsequent Inbound Leg Turn-by-Turn icon to reopen (Fig.7).
- Once at the Delivery Address destination, the driver arrives trip and selects “Arrive” (Fig.8)
- Driver confirms the Arrival (Fig.9).



For any questions or concerns about this Service Talk, please contact your immediate supervisor.