



NATIONAL ASSOCIATION OF POSTAL SUPERVISORS

National Headquarters
1727 KING STREET, SUITE 400
ALEXANDRIA, VA 22314-2753
(703) 836-9660

June 6, 2023

Board Memo 051-2023: Additional Information on Small Bead Mercury Discovered at Tularosa, New Mexico Post Office

Executive Board,

Below is additional information regarding the mercury spill discovered at the Tularosa, New Mexico Post Office, which occurred yesterday.

Adding in mercury at the El Paso TX PDC.

Based on the upstream tracking efforts for the mercury spill found in a DPS tray in Tularosa NM, the initial review in the El Paso TX P&DC resulted in a visual confirmation of suspected mercury in the Tularosa DPS bin on DBCS#2 in the El Paso TX PDC (pics below).

**Also received an updated picture of the various spill beads (changed from 1 bead to 3) found in Tularosa's DPS tray in the Tularosa P.O. (below).

Following the Interim Mercury SOP – the following update:

Southwest Division: El Paso TX P&DC

People:

- 50 employees on the clock. Any employees potentially exposed have washed their exposed skin.
- Employees at Co-Located Retail and Delivery unit still working at this time. No medical needs.

Property:

- DBCS #2 processed DPS for Tularosa, NM.
- All DBCS Machines cordoned off.
- Currently evaluating path from DBCS machines to dock ~ USPIS reports no visual evidence at this time of mercury.
- Trailer T-49 from El Paso, TX has been visually inspected. No evidence of mercury present. (two pictures below)

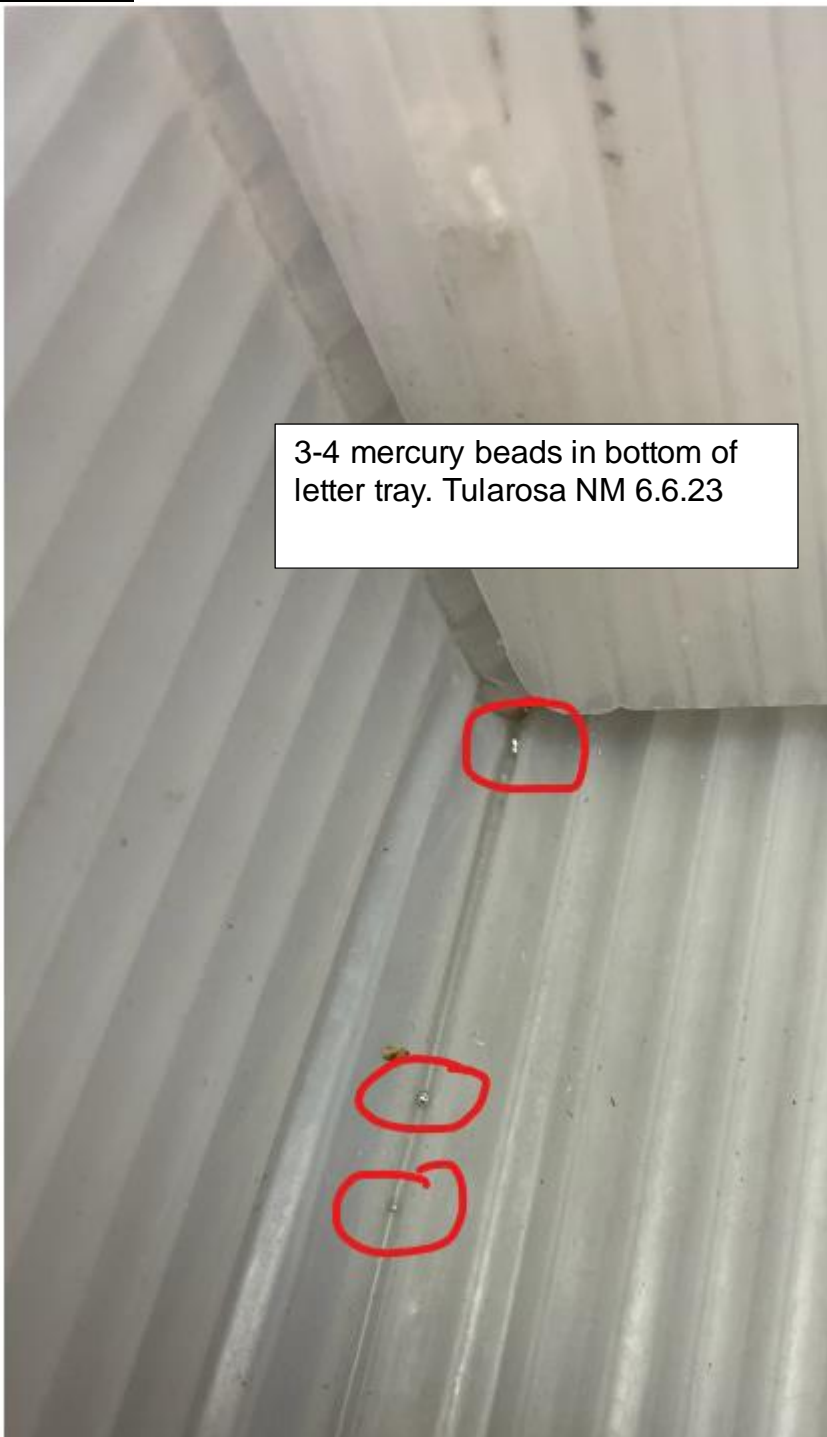
Product:

- All mail processing operations have ceased until further notice.
- All Retail and Delivery operations did not evacuate and are still open and in service. Carriers already out for delivery.

Communication:

- Area EMT (CRDO / RVP / LOG)
- USPIS
- El Paso PDC EMT
- PANS alert initiated

Pictures:



DBCS #2 – BIN 138 (FLOOR PLATE –bin for Tularosa, NM)



TWO PICTURES FROM EL PASO, TX P&DC DOCK

Picture #1 – Dock Area



Picture #2 - See silver dot (dock area):



USPS Headquarters Industrial Hygienist and HQ OSH engaged with onsite leadership and contractors; working through the mobilization of Emergency Preparedness Response and Recovery (EPRRS) and the additional expense to this needed response. Evaluation by EPRRS contractor will determine process for remediation. ETA for EPRRS is TBD.

Thank you, and be safe.

NAPS Headquarters